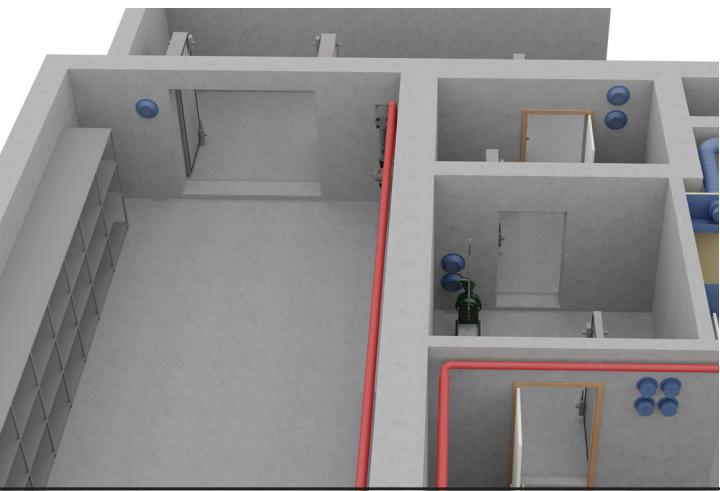


Distribuzione dell' aria / Sovrappressione

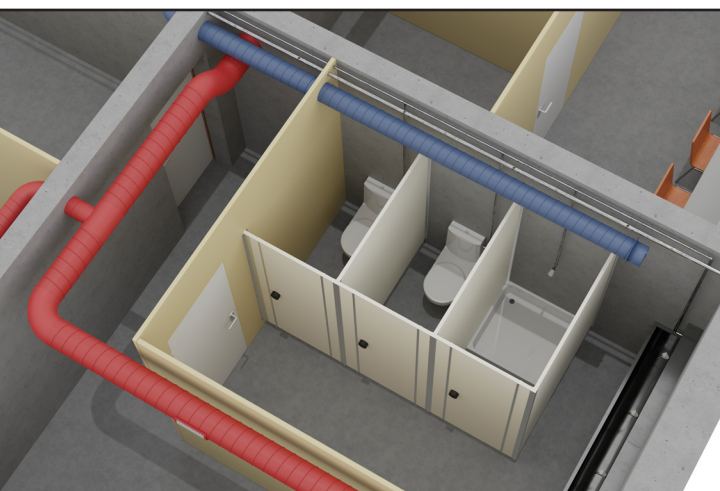
Locale degli attrezzi / Chiusa / Predisinfezione



Cucina (Filtro antigrasso)



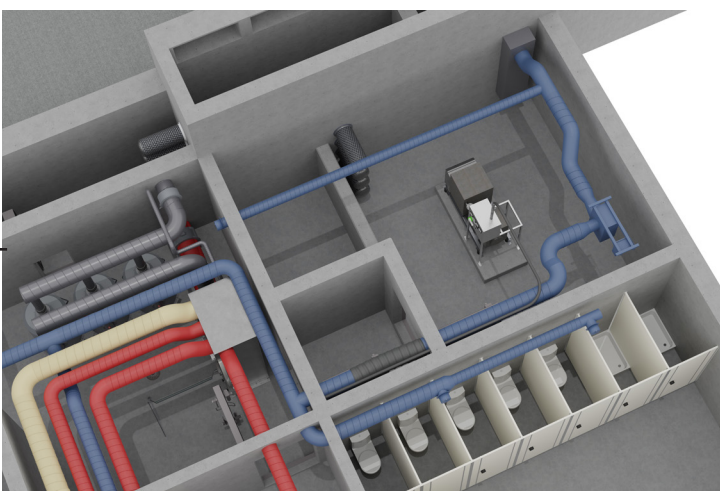
Toilettes / Doccia



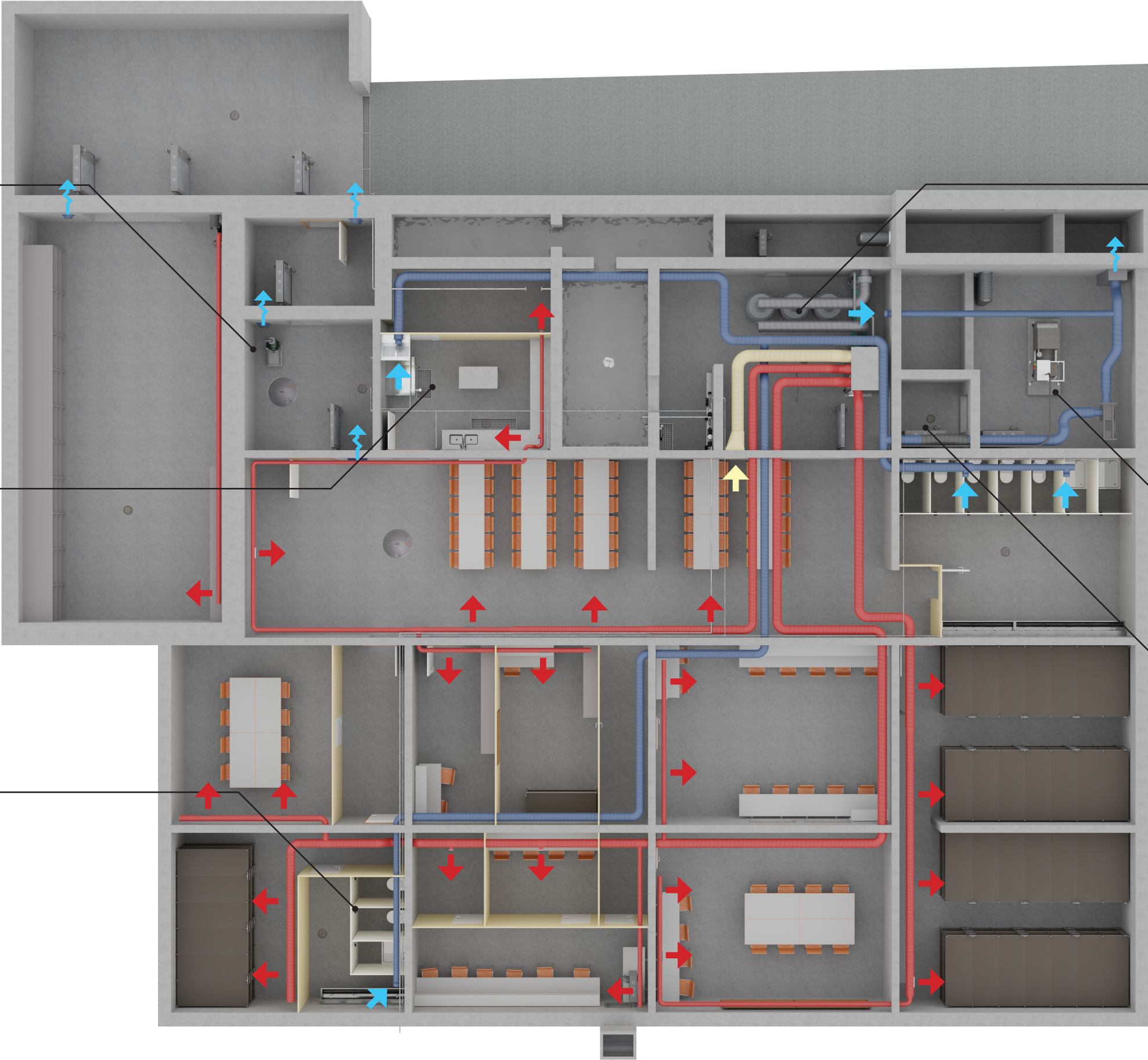
Locale di ventilazione (Apparecchio di ventilazione)



Sala macchine (Ventilatore d'espulsione) / Toilettes



Chiusa



↑ Aria d'immissione →↑ Aria d'espulsione ↑↑ Aria fresca